

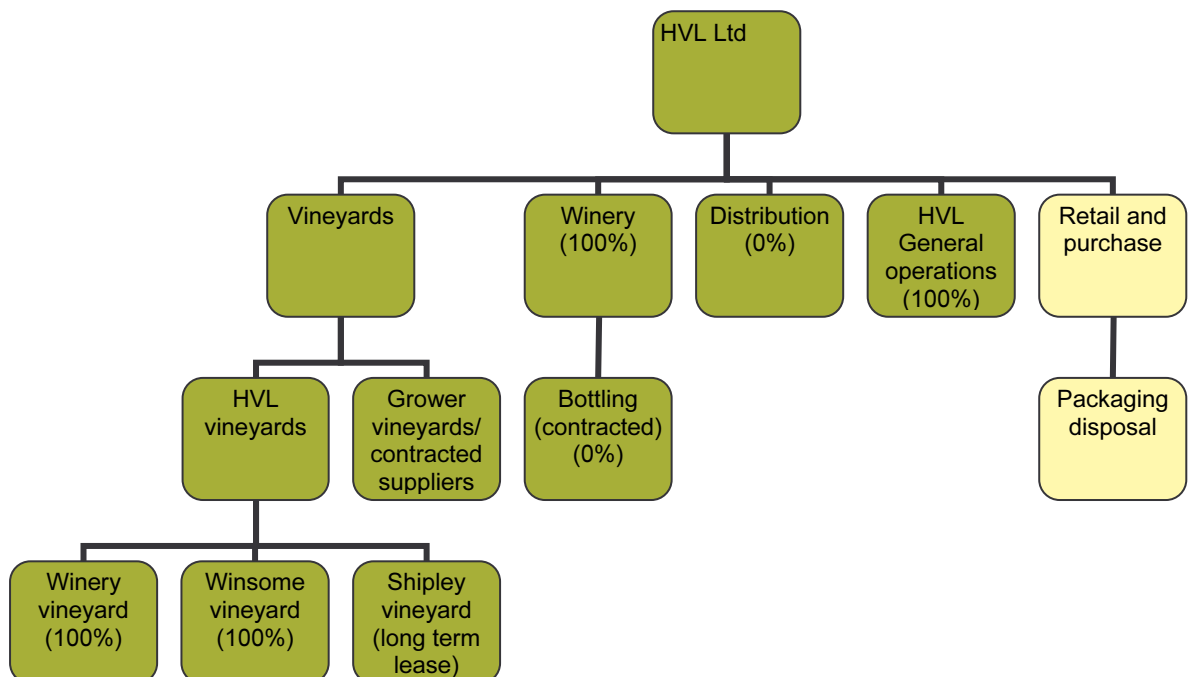
# Summary of carboNZero certification: Huia Vineyards Ltd



**Introduction** – Huia Vineyards Ltd (HVL) is a family-owned wine production company established in 1996, located in the Wairau Valley, Marlborough, New Zealand. Huia Vineyards Ltd is focused on hand crafting fine unique wines. Blending modern and traditional techniques Huia makes seven premium wine varieties: Sauvignon Blanc, Pinot Gris, Gewürztraminer, Riesling, Chardonnay, Pinot Noir and Vintage Huia Brut.

Huia Vineyards Ltd own a winery and three vineyards. Huia Vineyards Ltd are also involved in the Sustainable Winegrowing New Zealand scheme, with both the winery and vineyards achieving accreditation.

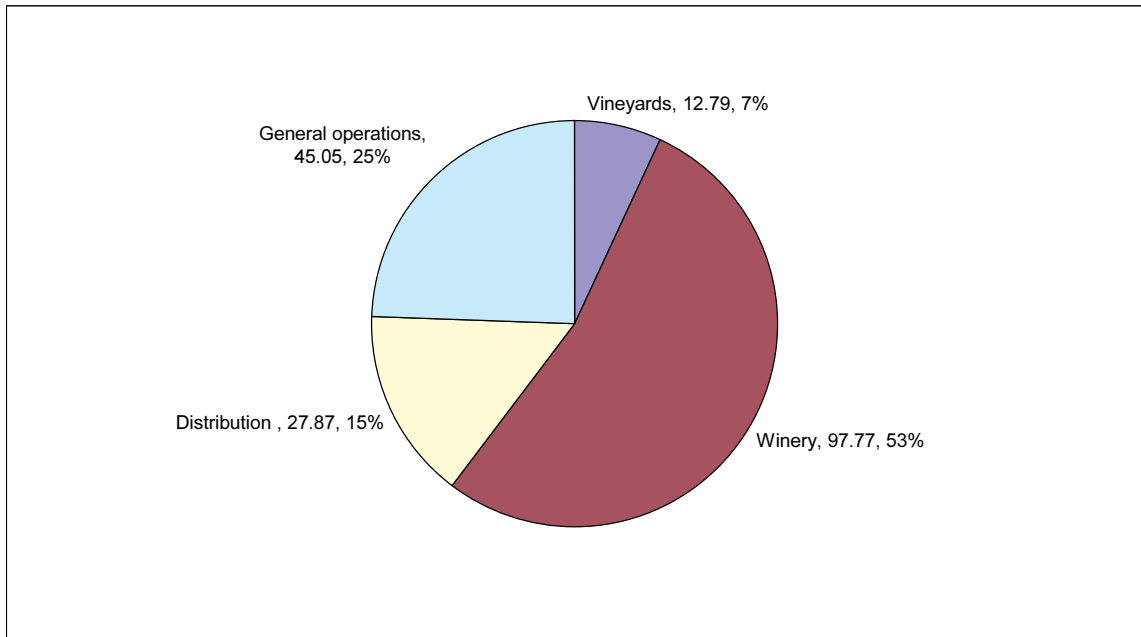
**Boundary** – the diagram below shows the organisational structure used for describing Huia Vineyards Ltd’s greenhouse gas (GHG) emissions inventory, and what business units were included in the carboNZero certification. Yellow business units were excluded from the certification.



**Consolidation approach** – financial control

**GHG emissions profile** – the diagram below shows the operational GHG emissions for Huia Vineyards Ltd by business activity. Huia Vineyards Ltd’s total emissions for this period were 183.9 tonnes carbon dioxide equivalents (CO<sub>2</sub>e).

# Summary of carboNZero certification: Huia Vineyards Ltd



**GHG emissions reduction commitments** – Huia Vineyards Ltd has developed a GHG emissions reduction plan. Some projects in this plan include:

- Installing energy efficient lights throughout the buildings
- Insulating the Winery hot water cylinder
- Implementing a driver education scheme
- Encouraging suppliers to adopt energy efficient production methods

**Offset** – 184 tonnes CO<sub>2</sub>e from EBEX21<sup>1</sup> native forest regeneration

**Verified by** – Verification NZ Limited

**Base year** – 01/7/2006 to 30/6/2007

**Certification status** – carboNZero certified in respect of its “organisation” and “wine products”.

**Valid until** – 30/9/2009.

<sup>1</sup> EBEX21 – Emissions Biodiversity Exchange in the 21<sup>st</sup> Century project creates carbon credits through the regeneration of native forest on private land – see [www.ebex21.co.nz](http://www.ebex21.co.nz)